

ALYSIUM

EVOLUTIONARY INTERCONNECTS

DRAWING REF: **A35-2688**
 DRAWING REF: SD 4.0 CARD PUSH CONN. SINKING H1.25 (Reverse Type)
 REVISION: 00 (DT 150402) Initial Issue

SPECIFICATION MATERIAL

Insulator: Thermal Plastic UL94V-0 (LCP+30%GF)
 Contacts: Copper Alloy (Phosphor Bronze C5210)
 Contact Area: Gold Plated over 50u" Min. Nickel
 Solder Tails: 100u" Min. Tin Plated over 50u" Min. Nickel
 Shell: Stainless Steel; Nickel Plated.

ELECTRICAL

Operation Voltage: 10 VAC Max.
 Current Rating: 1 Amps Max.
 Contact Resistance: 100m Ohms Max.
 Insulation Resistance: 1000M Ohms Min. 500 VDC
 Dielectric Withstanding Voltage: 500V AC / 1 Minute
 Operating Temperature: -20° C to +60° C
 Storage Temperature: -40° C to +70° C
 Durability: 1000 Cycles

PIN DEFINE:

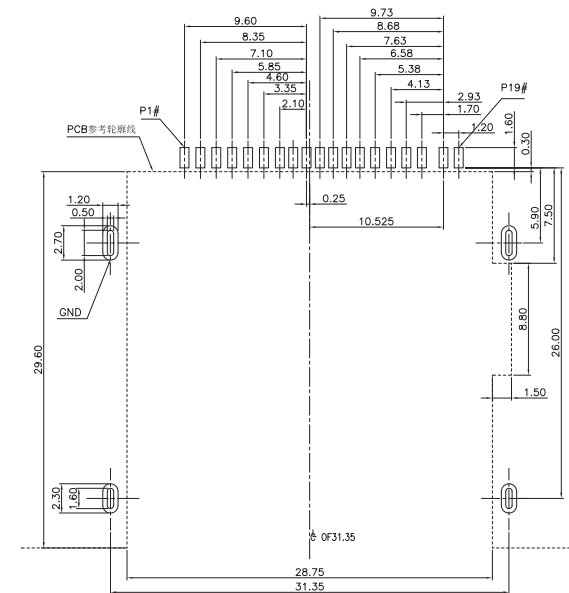
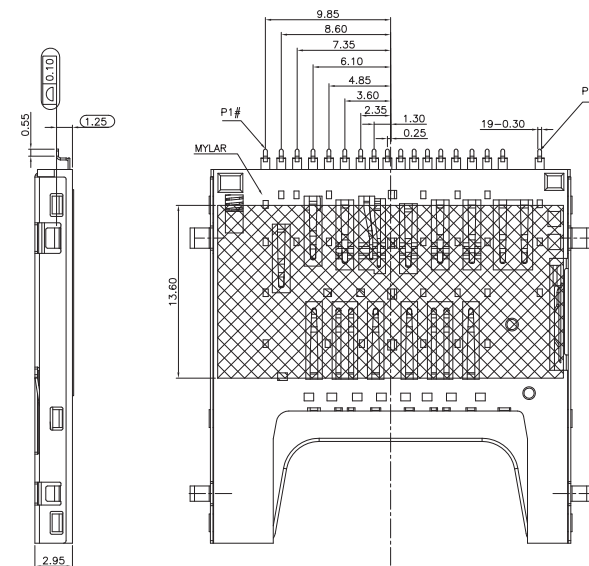
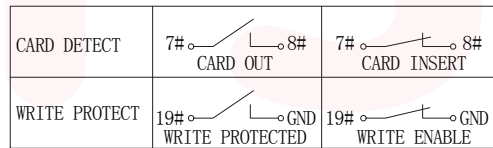
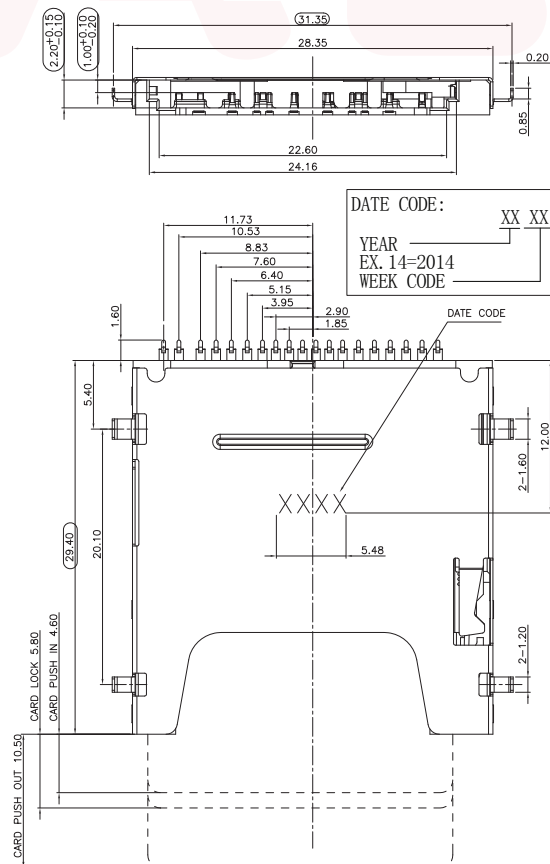
PIN#	NAME	DESCRIPTION	PIN#	NAME	DESCRIPTION
1.	VSS3	GROUND	11	VDD1	SUPPLY VOLTAGE
2.	DAT2	DATA LINE BIT2	12	D1-	DIFFERENTIAL DATE 1-
3.	DO+	DIFFERENTIAL DATE 0+	13	CLK	CLOCK
4.	CD/DAT3	CARD DETECT/DATA LINE BIT3	14	D1+	DIFFERENTIAL DATE 1+
5.	DO-	DIFFERENTIAL DATE 0-	15	VSS2	SUPPLY VOLTAGE GROUND
6.	CMD	COMMAND/RESPONSE	16	VSS5	GROUND
7.	CD	CARD DETECT	17	DAT0	DATA LINE BIT0
8.	VSS1	SUPPLY VOLTAGE GROUND	18	DAT1	DATA LINE BIT1
9.	VSS4	GROUND	19	WP	WRITE PROTECT
10.	VDD2	SUPPLY VOLRAGE (1.8V)			

NOTE:

- Series: SD Connector
- Type: Standard (DIP)
- Contact Number: 19
- Contact Area Platng: 1u" GOLD
- Solder Tails: Tin
- Apply Type: Reverse Type(PUSH) H1.25
- Shell Option: Stainless Steel (Ni)
- Type: Standard + Mylar
- Packing Type: Tape Reel
- Insulator Colour: Black

UNLESS OTHERWISE SPECIFIED TOLERANCE

ANG.	±5°
X.	±0.35
X.X	±0.30
X.XX	±0.25



RECOMMENDED PCB LAYOUT
 TOLERANCE UNLESS OTHERWISE IS ±0.05